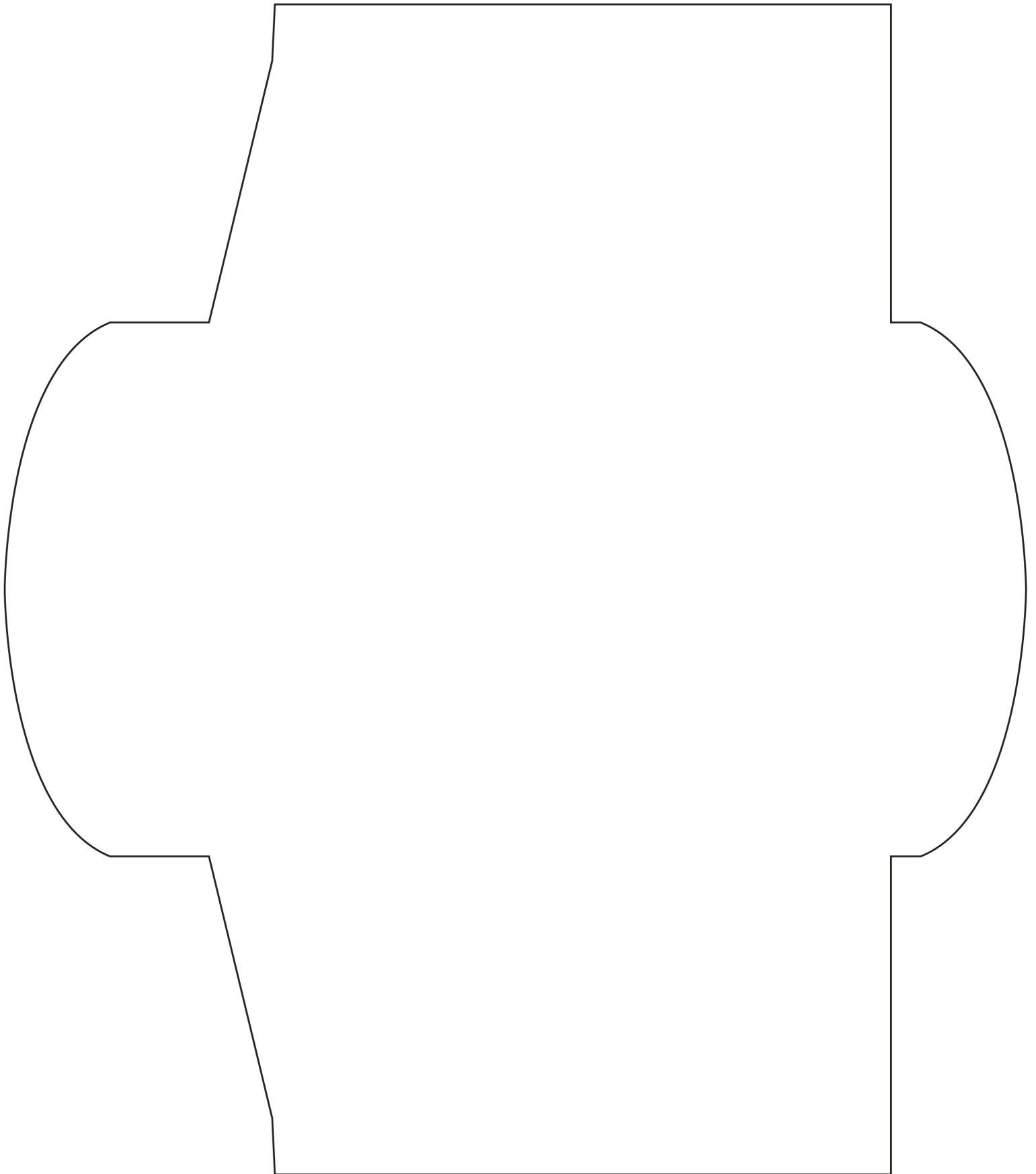


*Because so many readers were looking for a version of this invitation that could be made without a Silhouette cutting machine, I very quickly put the pieces of the card into this printable.

In order to make them fit on an 8.5 x 11" piece of paper, I had to shrink them. I have no idea how they'll look finished, but you are welcome to give it a shot!

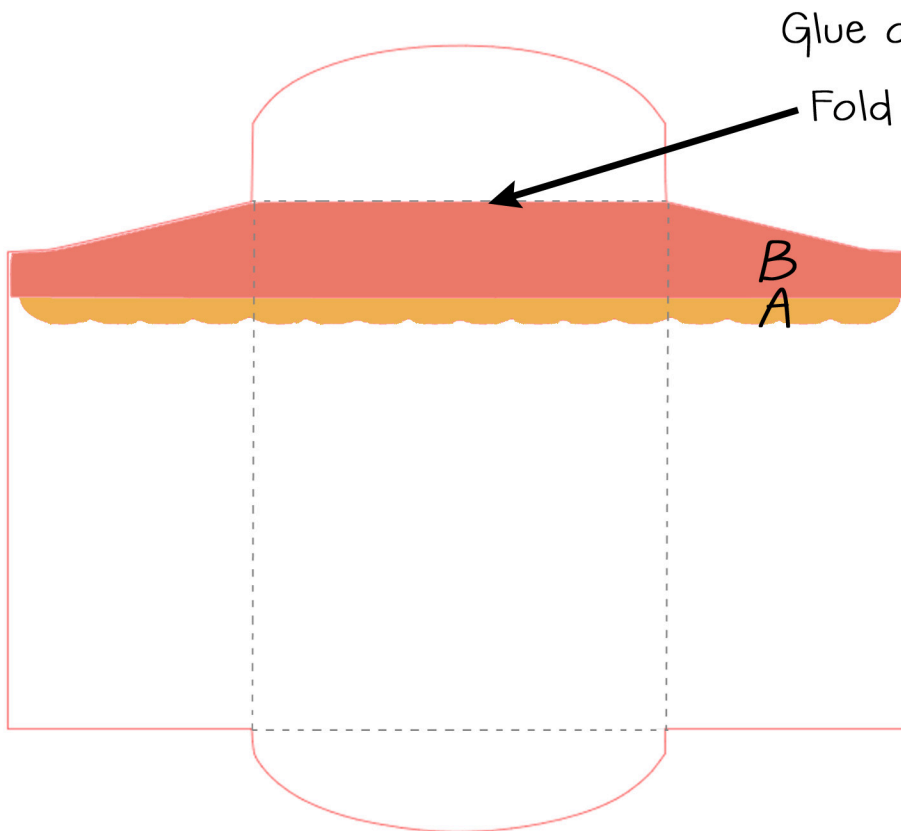
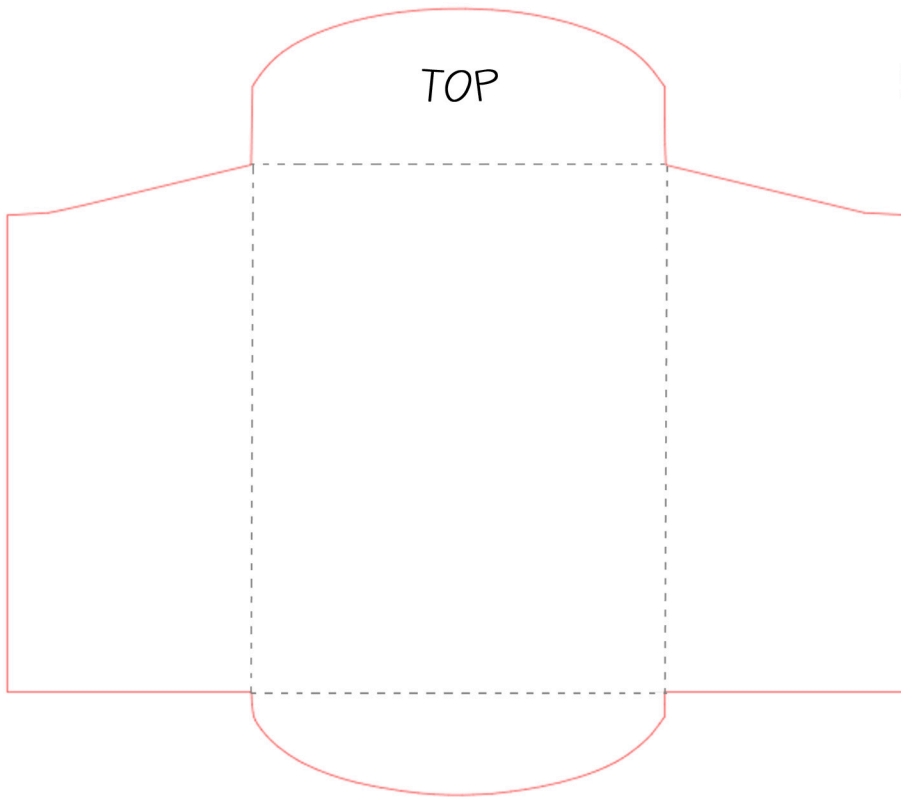
I hope they work for you!



Slumber Party Pillow Case Invitations

Instructions Diagram

One Creative Mommy
PRINTABLES FOR PERSONAL USE ONLY
OneCreativeMommy.com



Glue on strip A, then B

Fold on dotted lines

Fold two sides toward the middle back, and tape it closed.

Fold up the bottom flap, and tape it closed.

Slide invitation inside and fold over the top flap to finish.

(Double-sided tape hides well and looks nice.)