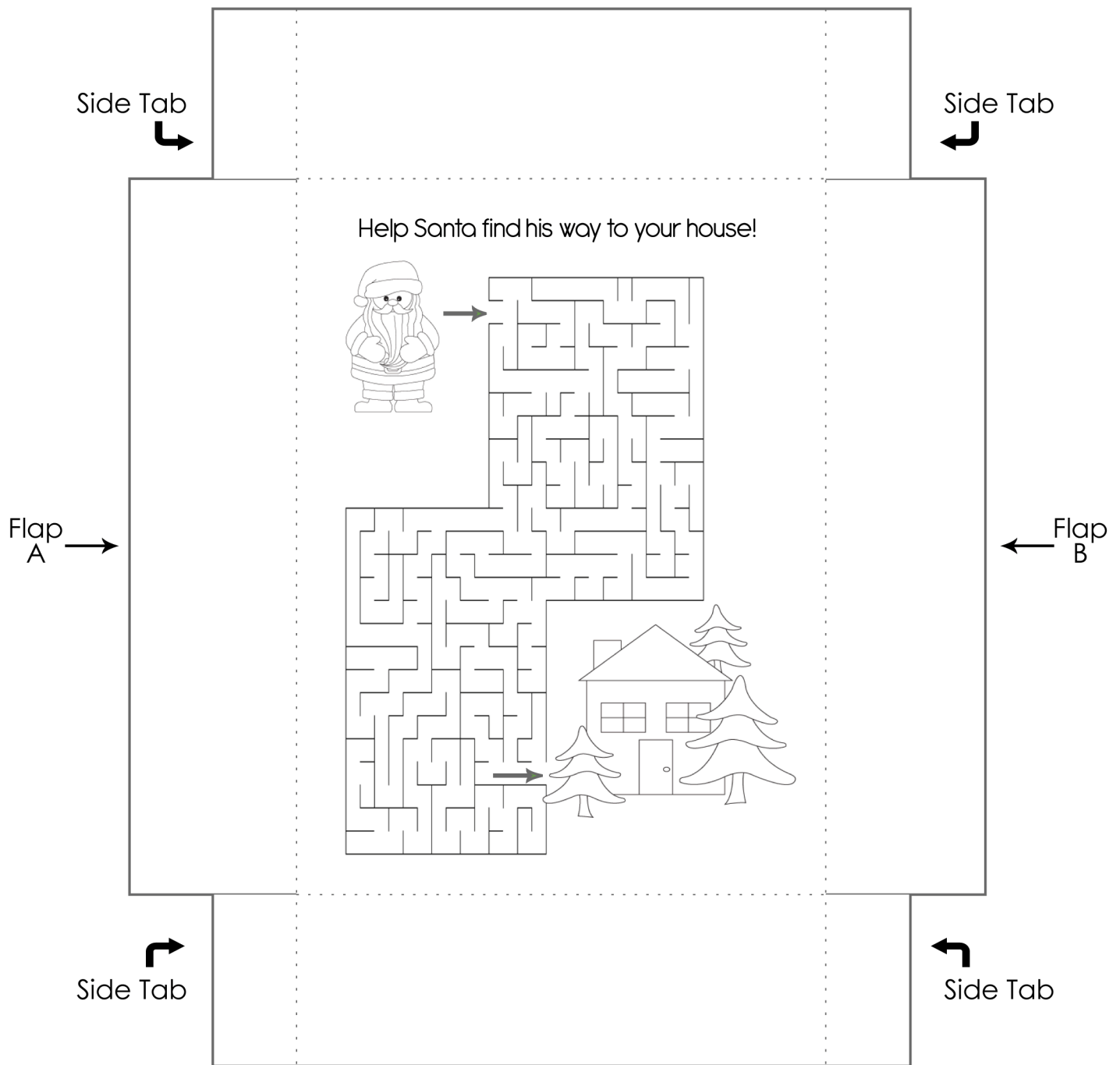


*Personal use only. If you want to share, please direct friends to download their own copy.



Inner Box Instructions for Assembly (Senior Version)

1. Cut out along the solid outside line.
2. Cut the short horizontal solid lines at the top and the bottom of flaps A and B.
3. Fold the top, bottom and side flaps in along the dotted lines toward the center of the box.
4. Fold the side tabs in and glue or tape the back of the side tabs to the inside of flaps A and B to form a box.
5. Glue or tape this box inside the outer box.